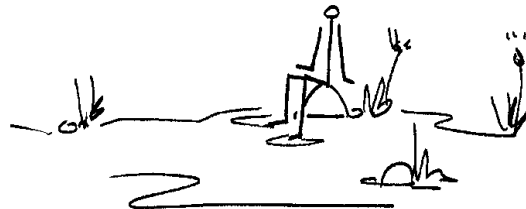


Institutional Management & Governance

I. Current capacity building challenges in the water sector

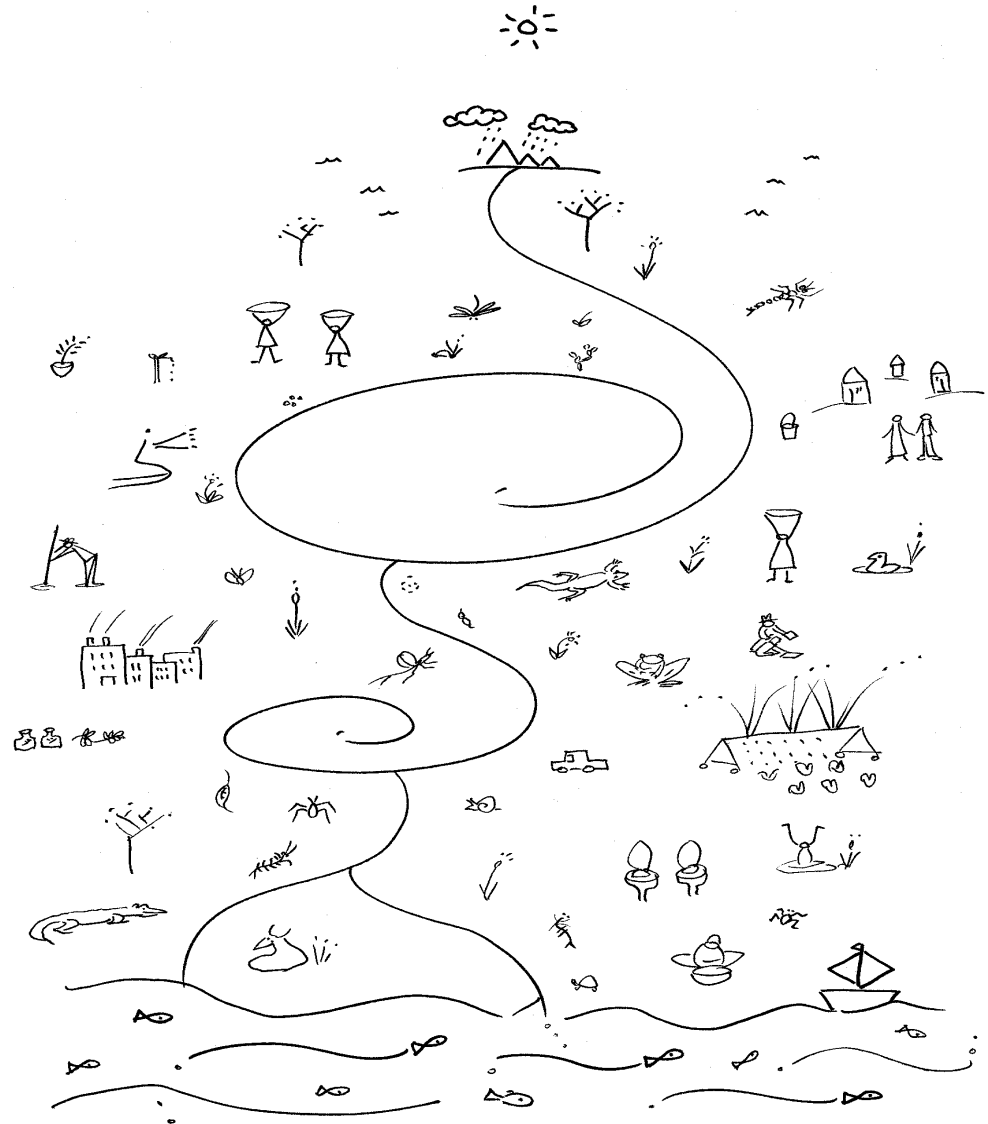
II. How selected challenges can be addressed during FETWater Phase III

Tally Palmer

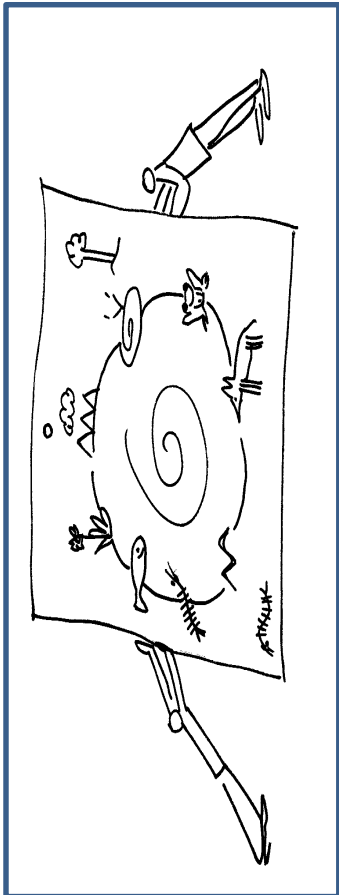


RHODES UNIVERSITY
Where leaders learn

We all live on this planet, in a catchment



FETWater III and the NWRS



“FETWater provides a practical expression of the NWRS 2, and makes an impact in terms of capacity in the sector, as well as on the ground.” *Desighen Naidoo, CEO WRC, 2014*

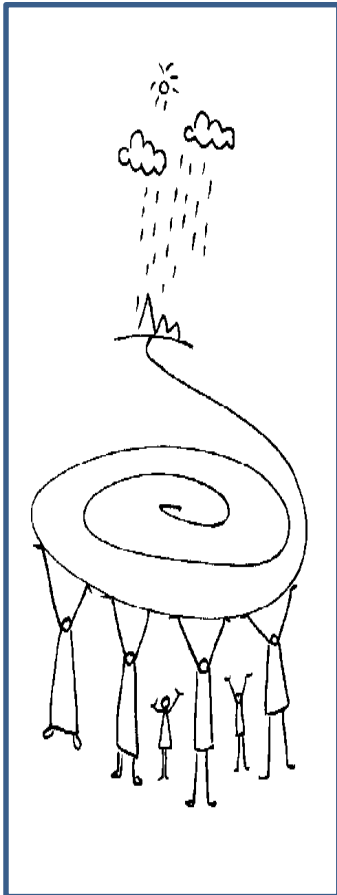
NWRS2 Vision:

**“Sustainable, equitable and secure water
for a better life for all”**

NWRS2 Water Sector Priority Focus Area:

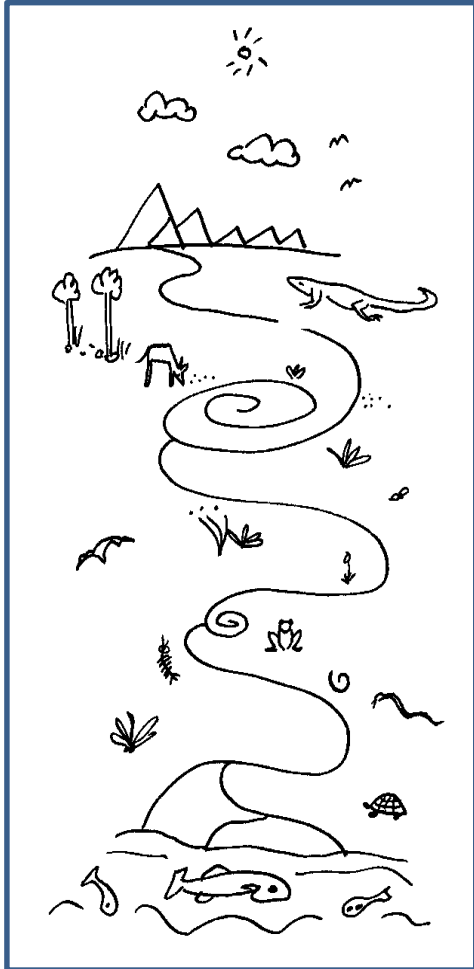
“Institutional establishment and governance”

FETWater III Networks



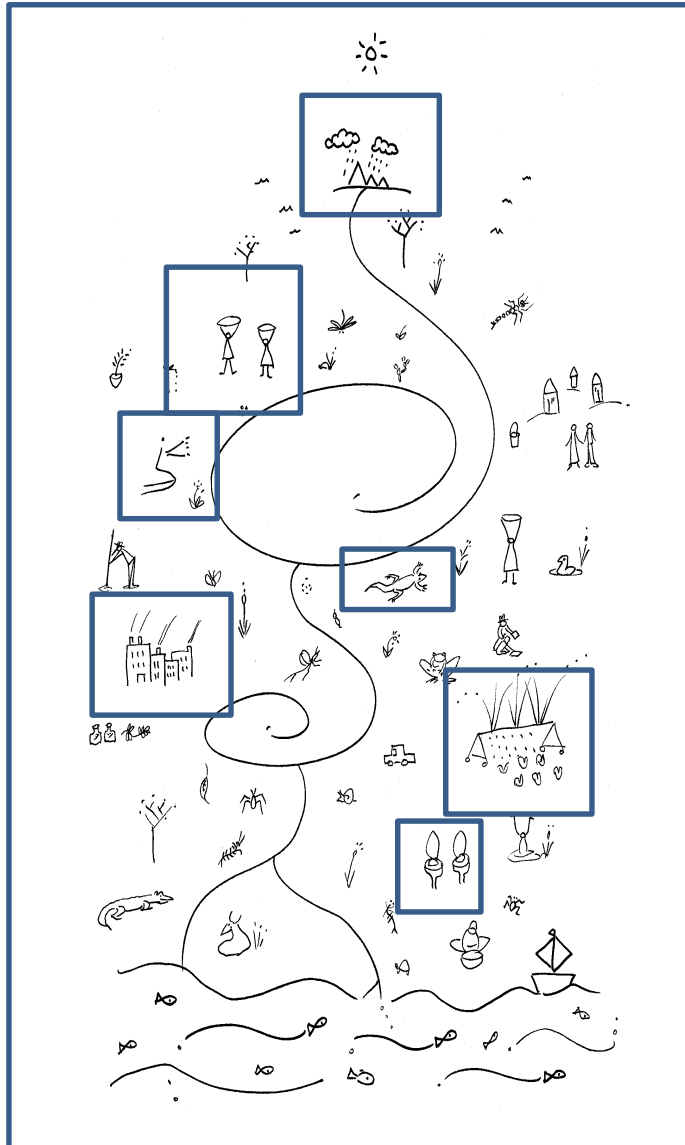
- **Infrastructure**
- **Monitoring and Assessment**
- **(I) WRM Planning**
- **Water Regulation**
- **Water Use and Services**
- **Institutions and Governance**

Current capacity building challenges in the water sector are extensive



- Focus on linking existing networks to NWRS 2 priorities
 - Two institutional and governance priorities in NWRS 2:
 - CMAs
 - Catchment Management Forums
 - Water Use Associations
 - Local Government
 - Water services authorities
 - Water services provider
 - Therefore link to but not focus on:
 - International bodies
 - Water Utilities
 - National water resources infrastructure institutional model
- (NWRS Fig 10, P60)

Research frontier: Why do we need a transformative research and management practice?



- **water by its nature connects and integrates**
- **even with the principles of equity, sustainability and efficiency**
- **ALL people CANNOT have ALL THEY WANT at the same time in the same place**
- **discontent and disappointments are experienced as “wicked problems”**
- **need new approaches: towards a new paradigm**

Towards a New Paradigm

Researchers
New ideas, approaches, concepts & methods

Stakeholders
Mutual Learning
Shifting power relations
Improved decision making
Improved mandate delivery

Integration, reflection, collaboration

DWS

Strategic Adaptive Management

CMAAs

Citizen Science
Political ecology
Learning & social learning

Industry (including mining)

Systems analysis

Municipalities

Resilience

Communities & Civil Society

Complexity

Transdisciplinarity

New practice (doing)

New discourse (language)

Case study 1. Makana /Sundays River . Local scale
Microbial pollution theme

Case Study 2. Crocodile. Catchment scale. **All 3 themes with industry**

Case Study 3 Olifants. Regional scale.
Eutrophication & Resource Protection themes

Towards a New Paradigm

Researchers
New ideas,
approaches,
concepts
& methods

Stakeholders
Mutual Learning
Shifting power
relations
Improved decision
making
Improved mandate
delivery

Integration, reflections, collaboration

Strategic Adaptive
Management
VSTEOP

Citizen Science
Political ecology
Learning & social learning

Systems analysis

Resilience

Complexity

Transdisciplinarity

**New discourse
(language)**

DWS

CMAAs

Industry
(including mining)

Municipalities

Communities &
Civil Society

**New practice
(doing)**

WRC TNP

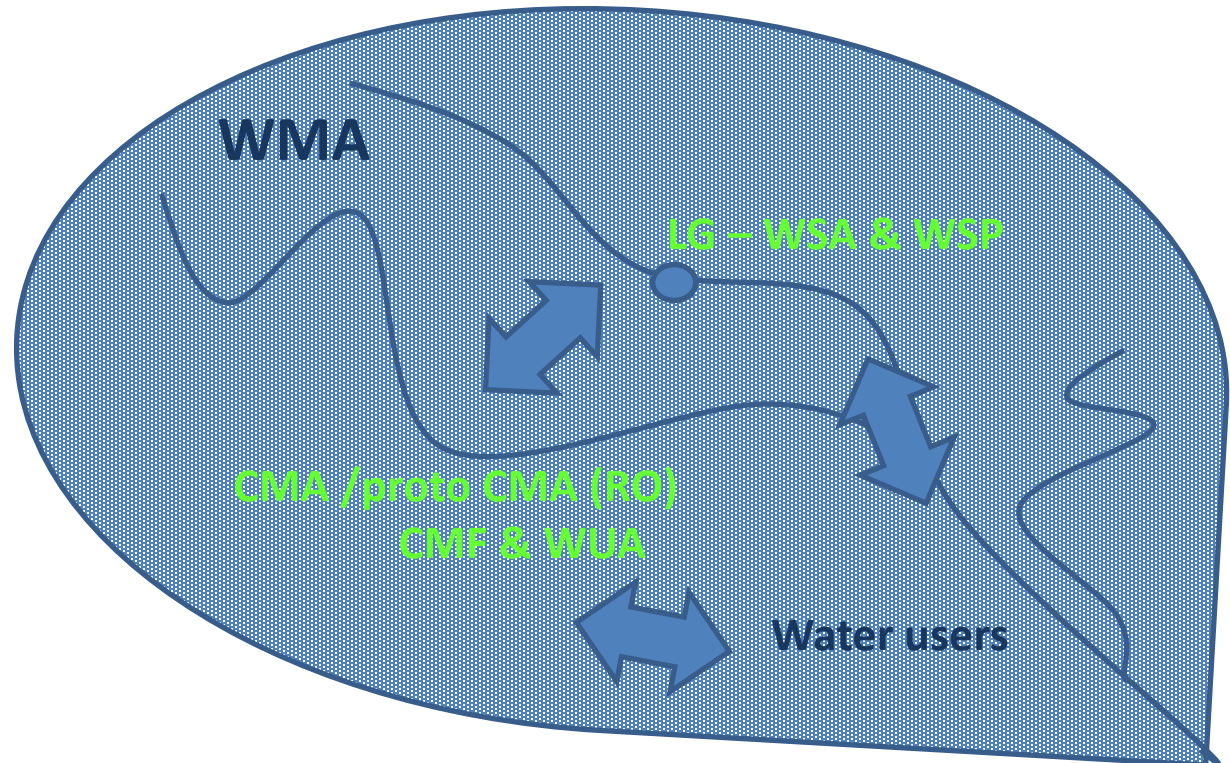
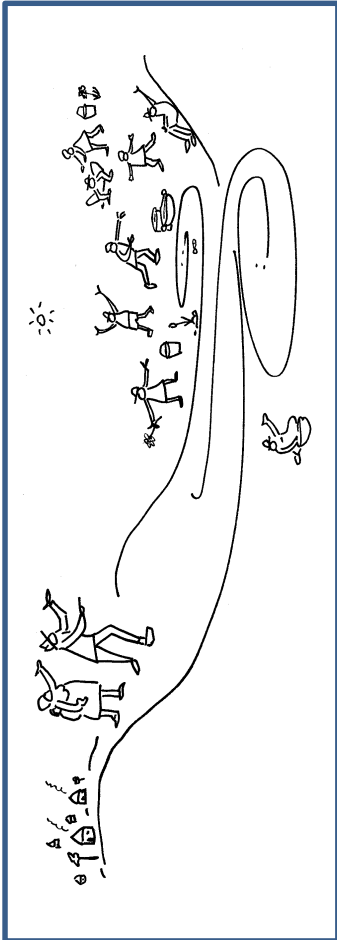
Umgeni River Catchment

Berg River

**Ntabelanga/Laleni
(Mzimvubu River)**

Using the TNP to link **FETWater network** to **NWRS institutional priorities**

DWS Head Office : CD FET WATER champions
e.g. Ms Thoko Sigwasa CD Institutional Oversight



Fast-track research to practice 

Towards a New Paradigm

Developing communities of practice

Skills Training
FET Water III

DWS

CMAAs

Industry
(including mining)

Municipalities

Communities &
Civil Society

RO (proto CMA), CMA Boards & Staff

CMF & WUA

Integration, reflections, collaboration

Core Concept Training

VSTEED analysis

Strategic Adaptive Management

Mapping ecological infrastructure

Linking EI to ecosystem services (WATRES) & to livelihoods and well-being

Systems analysis

Activity & institutional analysis
Transdisciplinary team building & project management
Adaptive CMS development

Priority municipalities and metros

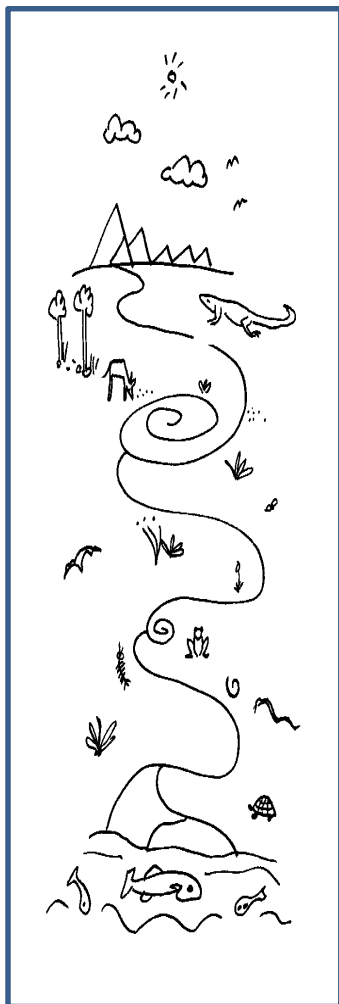
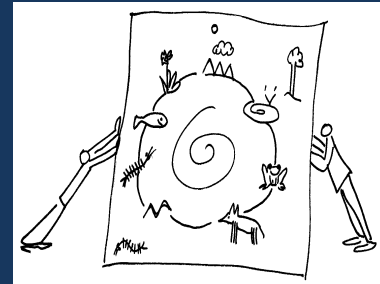
DWS HO



OTHER NETWORKS



Build & support UNESCO partnerships

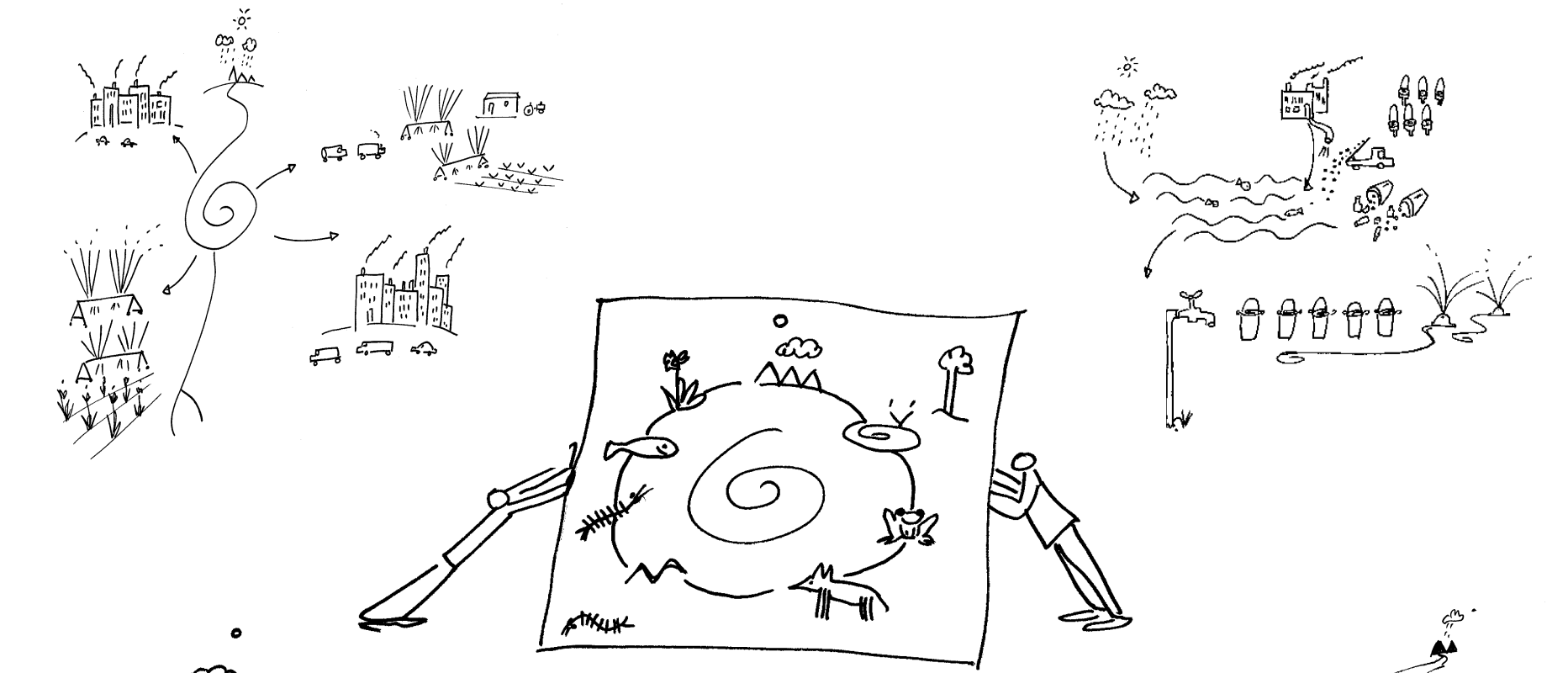


“The WRC is very keen to take this science partnership to another level,

we’re very keen alongside that, to take the water debate to the next level,

the [UNESCO] Category 1 Centre at Rhodes University and the Category 2 Centre at UKZN will help us achieve this progression”

WRC CEO FETWater III signing 2014



Thank you

